

MAGNOLIA BLUFF

LYING IN THE SOUTHWEST ONE-QUARTER OF THE SOUTHEAST ONE-QUARTER OF SECTION ONE, TOWNSHIP 38 SOUTH, RANGE 40 EAST, MARTIN COUNTY, FLORIDA

RANGE 41 EAST
RANGE 40 EAST

S.E. CORNER, SEC. 1
T 38 S, R 40 E

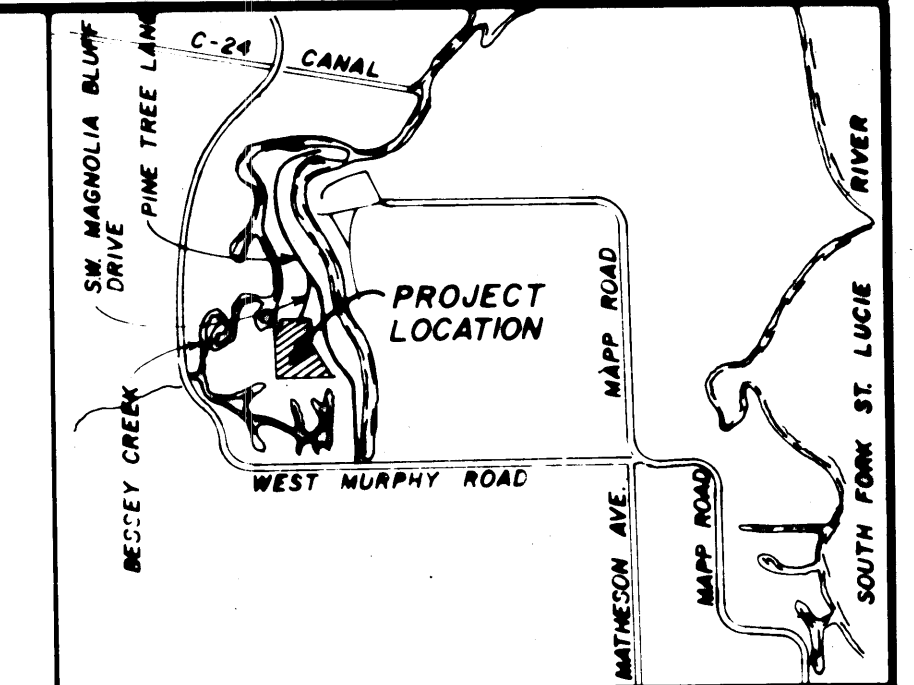
PRM
S.W. CORNER, LOT 66, SECT. 3
HIDEAWAY ISLES.

CLERKS RECORDING CERTIFICATE

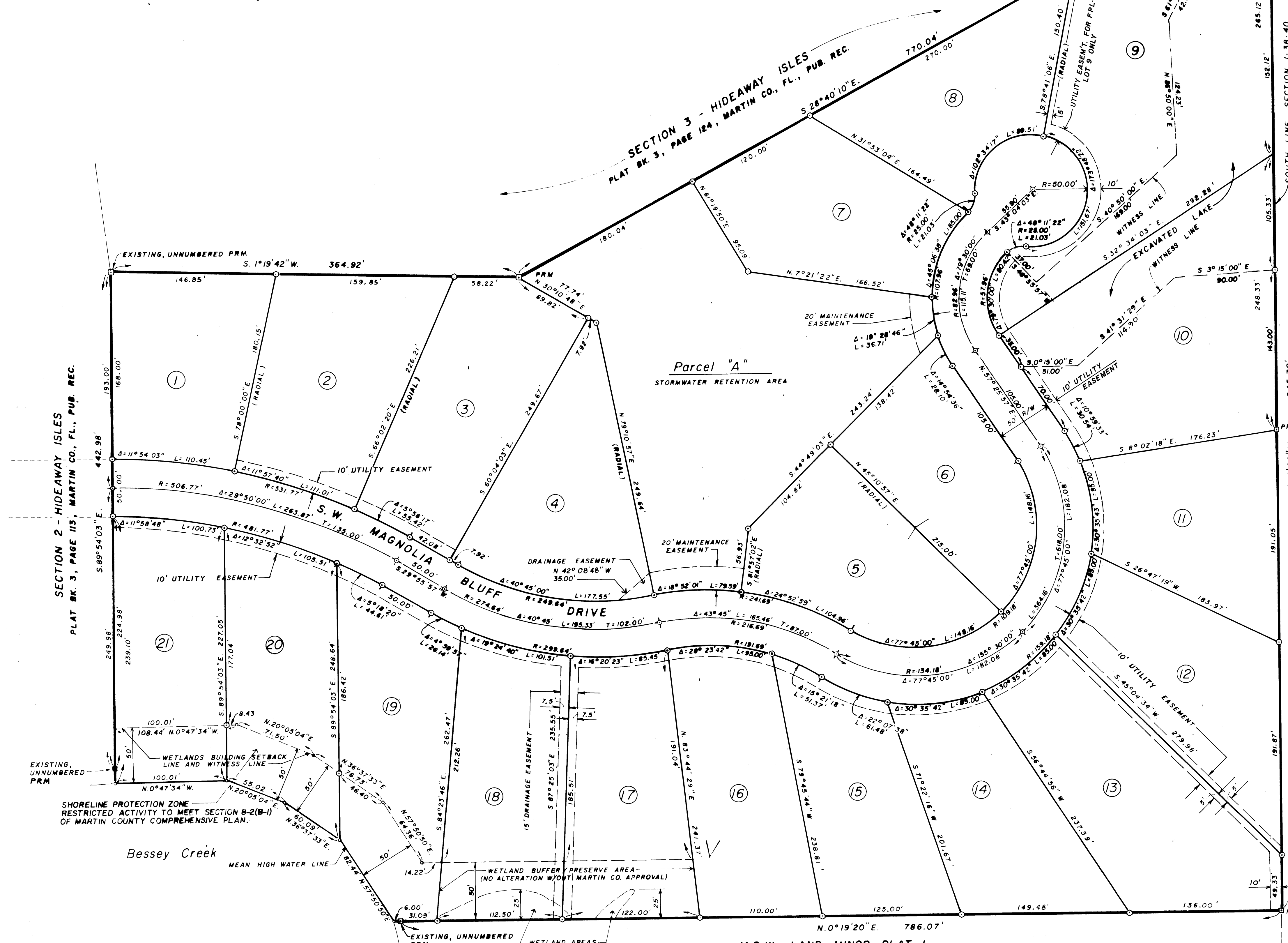
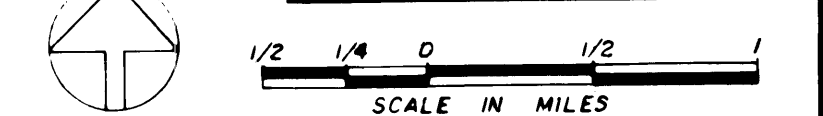
I, Louise V. Isaacs, Clerk of the Circuit Court of Martin County, hereby certify that this plat was filed for record in Plat Book 10, Page 42, Martin County, Florida, public records this day of _____, 1986.

LOUISE V. ISAACS, CLERK
CIRCUIT COURT
MARTIN COUNTY, FLORIDA
BY: _____
Deputy Clerk

File No. _____

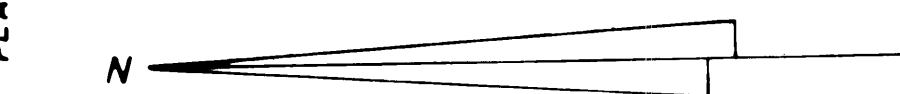


LOCATION MAP



GENERAL NOTES

- MONUMENTATION
 - - DENOTES PERMANENT REFERENCE MONUMENT (P.R.M.)
 - ◇ - DENOTES PERMANENT CONTROL POINT (P.C.P.) ON ROAD CENTERLINE
 - - DENOTES PERMANENT CONTROL POINT (P.C.P.) AT LOT CORNERS (5/8" IRON ROD W/ I.D. CAP)
- BASIS OF BEARINGS
BEARINGS SHOWN HEREON ARE REFERENCED TO THE SOUTH LINE OF SECTION 1, T.38 S., R.40 E.



DATE: MAY 12, 1986

THIS INSTRUMENT PREPARED BY:
C. CALVERT MONTGOMERY & ASSOCIATES ENGINEERS
STUART, FLORIDA

M B W LAND MINOR PLAT I
PLAT BK 6, PAGE 74, MARTIN CO., FL., PUB. REC.